

Manufacturer of Drilling & Trenching Tools

**DrillingWorld**

The Driller's Toy Store

Utility & Pressure Digger  
Auger Tools & Components

DRILLING WORLD

(800)-331-9988



Over 40,000 sq/ft of in stock drilling & trenching equipment

## ABOUT DRILLINGWORLD

DrillingWorld has been in business for 21 years. We started our business with a commitment to customer satisfaction. Our corporate name is Drilling & Trenching Supply, Inc. We are currently doing business as (DBA) Drilling World.

We have expanded our great customer care staff and will continue to improve our business by listening to our customer needs.

Our goal is making your business successful by providing you with the best quality tools. We look forward to working with you.

### DrillingWorld Services

- Drilling Tools
- Trencher Parts
- Augers
- Auger Teeth
- Extensions
- Auger Drills & Motors
- Foremost Mobile Distributor
- Large Bullet Tooth Inventory
- Same Day shipping on most orders
- Free GroundFreight on any order over \$200
- Quality Products
- Competitive prices

### Office Hours:

Monday through Friday  
6:00 a.m. to 4:00 p.m. P.T.

### Will Call Hours:

6:30 a.m. to 3:30 p.m. P.T.

### Contact Information

Email: [sales@drillingworld.com](mailto:sales@drillingworld.com)

Phone: (800) 331-9988

Fax : (510) 895-8129

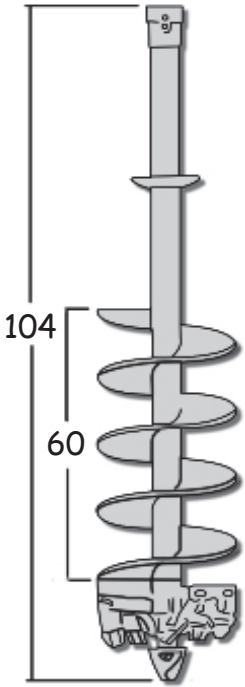
# Contents

<u>Medium Duty Augers</u> .....	Page 3
<u>Derrick Diggers</u> .....	Page 3
<u>Medium Duty Bullet Augers</u> .....	Page 4
<u>Bullet Shank Plates &amp; Pilots</u> .....	Page 4
<u>1650 Series Teeth</u> .....	Page 5-6
<u>1650 Series Four Teeth Pilots</u> .....	Page 7
<u>1650 Series Holders</u> .....	Page 7
<u>FH Pilots</u> .....	Page 8
<u>SB Pilots</u> .....	Page 9-10
<u>Pressure Digger HD Boring Heads</u> .....	Page 11
<u>Pilot Bit Adapters</u> .....	Page 11
<u>TCH Drill Heads</u> .....	Page 12
<u>Hex Couplers</u> .....	Page 13
<u>Hex Hubs</u> .....	Page 13
<u>Hex-Kelly Bar Extensions</u> .....	Page 14
<u>Hex-Kelly Bar without Holes</u> .....	Page 14
<u>Kelly Boxes</u> .....	Page 15-16
<u>2070 Series Teeth</u> .....	Page 17
<u>2070 Series Four Teeth Pilots</u> .....	Page 18
<u>2070 Series Holders</u> .....	Page 18
<u>Jiffy® Style Products</u>	
<u>Pilots</u> .....	Page 19
<u>Collars</u> .....	Page 19
<u>Auger Teeth &amp; Pockets</u> .....	Page 20
<u>Drilling Components</u>	
<u>Drive Lugs</u> .....	Page 21
<u>Pins</u> .....	Page 21
<u>Bucket Teeth- Esco® Type</u> .....	Page 22
<u>Installation Tools</u> .....	Page 22
<u>Storage Tools</u> .....	Page 22



# MD Augers

## Medium Duty Dirt Augers



Drilling Worlds MD Dirt Augers are used on Digger Derricks.

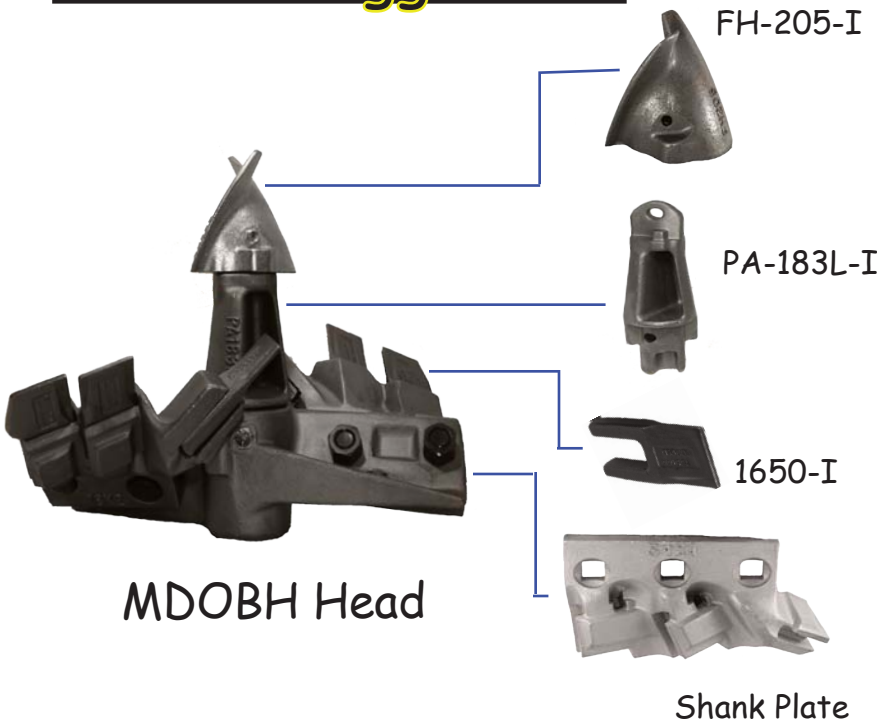
Hub Sizes Available:  
2" Hex, 2 1/2 Hex, 2 5/8, 3" Hex

Various lengths available upon request.

Carbide and Bullet Augers also available.

Diameter In.	Part No.
9	9MD104-60
10	10MD104-60
12	12MD104-60
14	14MD104-60
16	16MD104-60
18	18MD104-60
20	20MD104-60
24	24MD104-60
30	30MD104-60
36	36MD104-60
42	42MD104-60
48	48MD104-60

## Derrick Digger-MD



Part No.	Teeth Per Auger	Approx lbs.	Inches
MDOBH8-I	2	41	8
MDOBH9-I	2	42	9
MDOBH10-I	2	47	10
MDOBH12-I	4	64	12
MDOBH14-I	4	60	14
MDOBH16-I	4	61	16
MDOBH18-I	6	73	18
MDOBH20-I	6	75	20
MDOBH22-I	6	78	22
MDOBH24-I	7	90	24
MDOBH27-I	8	109	27
MDOBH30-I	8	121	30
MDOBH36-I	8	140	36
MDOBH42-I	10	160	42
MDOBH48-I	13	180	48

**DRILLING WORLD - 1-800-331-9988 - [www.drillingworld.com](http://www.drillingworld.com)**



# MD Duty Augers

## Medium Duty Bullet Augers

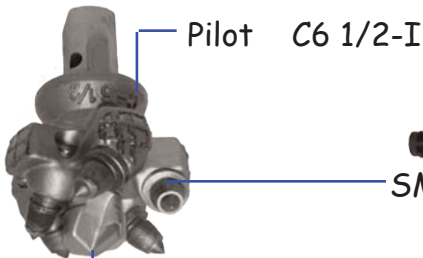
Boring Head w/ Removable Shanks

Diameter In.	Part No.
16	16MDC104-60
18	18MDC104-60
20	20MDC104-60
24	24MDC104-60

Bullet Shank Plate

Center Pilot

## Bullet Shank Plates & Pilots



Description	Part No.	Teeth Qty.	Approx. Wt. lbs.
16" Diameter Kit	C-116-I	13	43.5
18" Diameter Kit	C-118-I	15	48.5
20" Diameter Kit	C-120-I	15	51.5
24" Diameter Kit	C-024-I	17	56.5
16" Shank Plate	C-016-I	4	12.5
18" Shank Plate	C-018-I	5	15.0
20" Shank Plate	C-20-I	5	16.5
24" Shank Plate	C-24-I	6	19.0
6-1/2 Center Point	CP-18-I	5	18.5
Conical Tooth	SM02	X	0.6
Conical Tooth	SM06	X	0.5



**DRILLING WORLD-1-800-331-9988 - [www.drillingworld.com](http://www.drillingworld.com)**



# 1650 Series Teeth



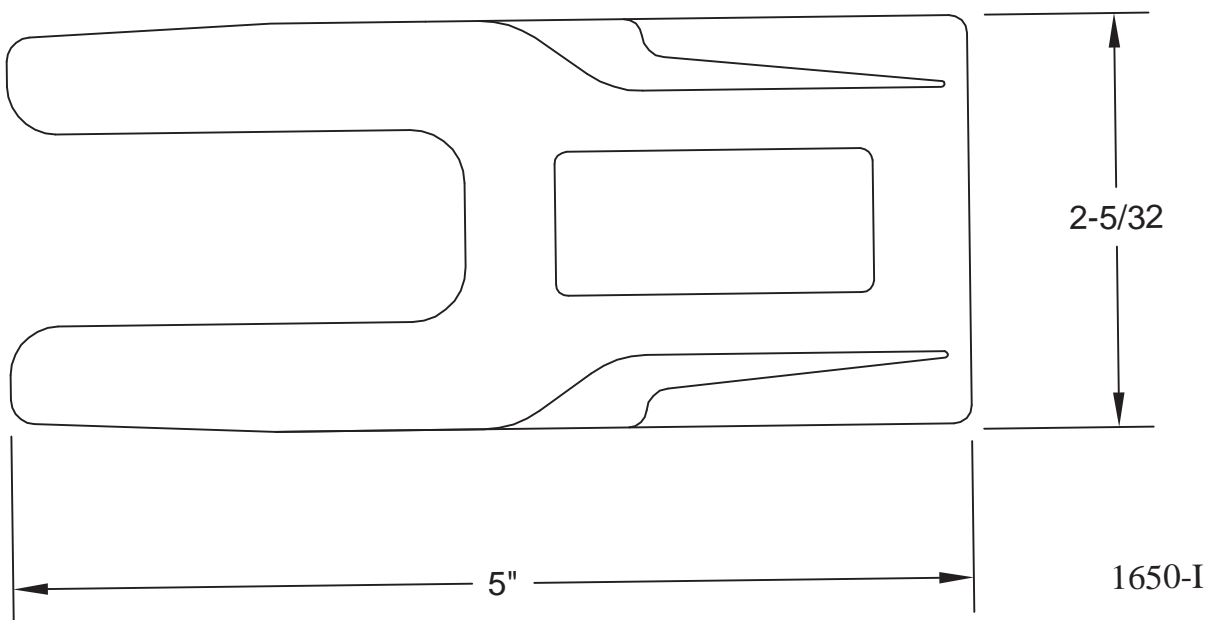
1650-I

1650HF-I

1652-I

1652HF-I

Description	Part No.	Application	Installation in head	Installation in P-1650	Unit lbs.
Dirt	1650I	Ordinary Digging	All Pockets	Yes	0.5
Hardfaced 1-Side	1650HF-I	Abrasive Soil, Impact	All Pockets HF-up	Yes, HF-up	0.5
Gage Tooth	1652-I	Dirt	Outside Pockets Only	Two Outer Pockets Only	1.2
Hardfaced Gage	1652HF-I	Abrasive Soil, Impact	Outside Pockets Only	Two Outer Pockets Only	1.2



**DRILLING WORLD-1-800-331-9988 - [www.drillingworld.com](http://www.drillingworld.com)**



# 1650 Series Teeth

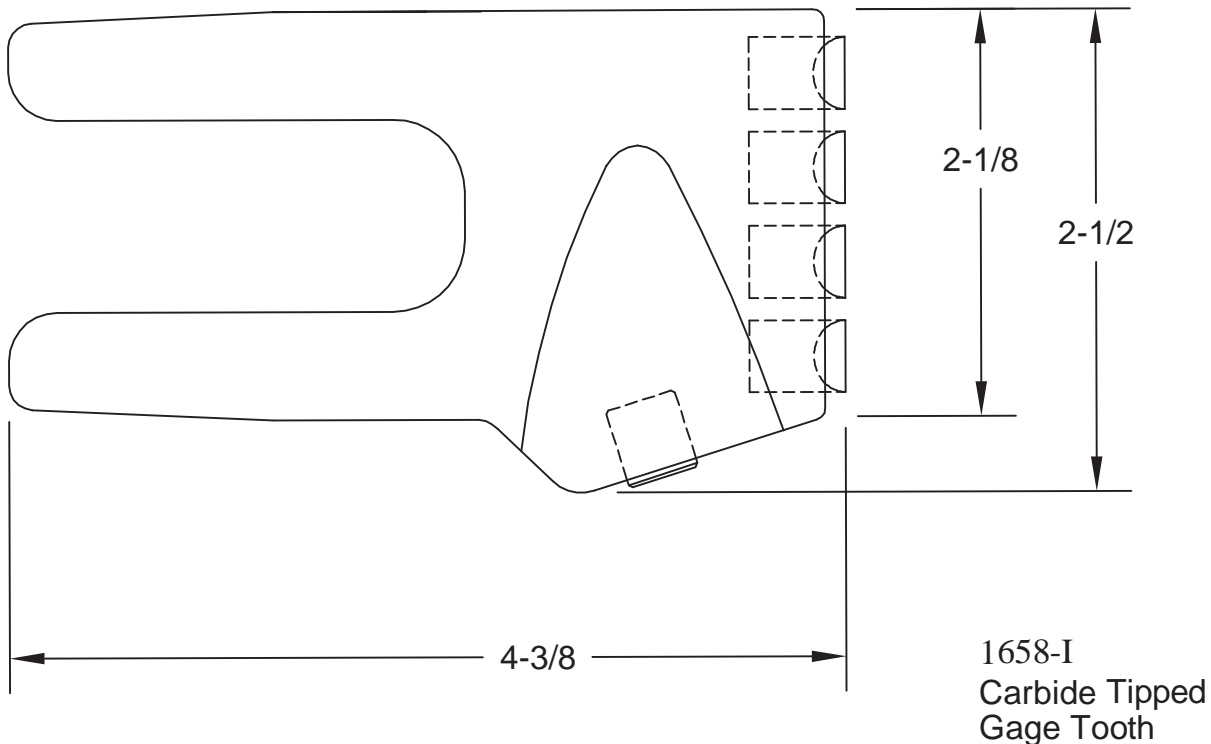


1656-I



1658-I

Description	Part No.	Application	Installation in head	Installation in P-1650	Unit lbs.
Tungsten Carbide	1656-I	High Abrasion Frozen Soil, Low Impact	All Pockets	Yes	1.3
Carbide Gage	1658-I	Highly Abrasive Soil Frozen Ground	Outside Pockets Flange Out	Two Outer Pockets Only Flange Out	1.3



**DRILLING WORLD-1-800-331-9988 - [www.drillingworld.com](http://www.drillingworld.com)**

# Series 1650



**P-1650-I**



**P-1656-I**



**FH-105-I**

Description	Part No.	Application	Unit lbs.
Four Tooth Dirt Pilot	P-1650-I	Compacted Soil	20.0
Four Carbide Tooth Pilot	P-1656-I	Fracturable Rock	20.0
Pilot Bit	FH-105-I	Hardpan	9.0

## Replacement Tooth Holders for 1650 series



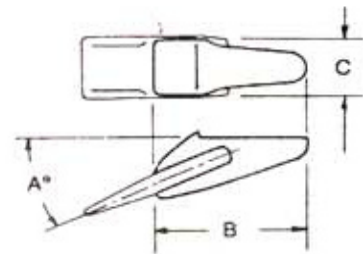
**WT50-I**



**FA50-I**



**1XS-I**



Description/Part #	Approx. Wt.	A	B	C	Weld Location
WA-50-I	4.0	25	5	1 7/8	Inside & Outside
FA-50-I	5.0	15	3 1/2	3	Inside & Outside
1XS-I	3.5	0	3 3/4	2 1/2	Side Cutter Position

**DRILLING WORLD-1-800-331-9988 - [www.drillingworld.com](http://www.drillingworld.com)**



# Pilot Bits



FH205-I



FH205C-I



FH205CXC-I



FH205HF-I



FH205HFTC-I

Part No.	Application	Description	Unit lbs.
FH-205-I	Ordinary Dirt	Standard	3.0
FH-205C-I	Rock/Abrasive Soil	Carbide Tipped	3.0
FH-205HF-I	Abrasive Soil- High Impact	Hardfaced	3.0
FH-205CXC-I	Compacted Rock	Carbide Edges	3.0
FH-205HFTC	Abrasive Soil- Low Impact	Chunky Carbise	3.0

# SB-Pilot Bits



SB Pilot bits range from 2 1/2" to 12" inches.  
All available in Standard, Carbide, Carbide Edge,  
Hardfaced & Hardfaced Tungsten Carbide.



Part No.	Diameter	Lug Size	Unit lbs.
SB-25-I	2 1/2"	Small	0.8
SB-25C-I	2 1/2"	Small	0.8
SB-25HF-I	2 1/2"	Small	0.8
SB-25CXC-I	2 1/2"	Small	0.8
SB-25HFTC-I	2 1/2"	Small	0.8
SB-30-I	3"	Small	1.0
SB-30C-I	3"	Small	1.0
SB-30HF-I	3"	Small	1.0
SB-30CXC-I	3"	Small	1.0
SB-30HFTC-I	3"	Small	1.0
SB-35-I	3 1/2"	Med.	2.0
SB-35C-I	3 1/2"	Med.	2.0
SB-35HF-I	3 1/2"	Med.	2.0
SB-35CXC-I	3 1/2"	Med.	2.0
SB-35HFTC-I	3 1/2"	Med.	2.0
SB-45-I	4 1/2"	Med.	3.0
SB-45C-I	4 1/2"	Med.	3.0
SB-45CXC-I	4 1/2"	Med.	3.0
SB-45HF-I	4 1/2"	Med.	3.0
SB-45HFTC-I	4 1/2"	Med.	3.0
SB-50-I	5"	Large	3.0
SB-50C-I	5"	Large	3.0
SB-50CXC-I	5"	Large	3.0
SB-50HF-I	5"	Large	3.0
SB-50HFTC-I	5"	Large	3.0
SB-60-I	6"	Large	4.0
SB-60C-I	6"	Large	4.0
SB-60HF-I	6"	Large	4.0
SB-60CXC-I	6"	Large	4.0
SB-60HFTC-I	6"	Large	4.0
SB-70-I	7"	Large	4.0
SB-70C-I	7"	Large	4.0
SB-70HF-I	7"	Large	4.0
SB-70CXC-I	7"	Large	4.0
SB-70HFTC-I	7"	Large	4.0
SB-80-I	8"	Large	5.0
SB-80C-I	8"	Large	5.0
SB-80HF-I	8"	Large	5.0
SB-80CXC-I	8"	Large	5.0
SB-80HFTC-I	8"	Large	5.0
SB-90-I	9"	Large	5.0
SB-90C-I	9"	Large	5.0
SB-90HF-I	9"	Large	5.0
SB-90CXC-I	9"	Large	5.0
SB-90HFTC-I	9"	Large	4.0
SB-100-I	10"	Large	7.0
SB-100C-I	10"	Large	7.0
SB-100HF-I	10"	Large	7.0
SB-100CXC-I	10"	Large	7.0
SB-100HFTC-I	10"	Large	7.0
SB-120-I	12"	Large	4.0
SB-120C-I	12"	Large	4.0
SB-120HF-I	12"	Large	4.0
SB-120CXC-I	12"	Large	4.0
SB-120HFTC-I	12"	Large	4.0

# SB-Pilot Bits





# Boring Heads

## Pressure Digger-HD



The HDOBH has an extended ramp on one side for welding to flight edge.

Part No.	Teeth Per Auger	Approx lbs.	Inches
HDOBH-8-I	2	31	8
HDOBH-9-I	2	32	9
HDOBH-10-I	2	37	10
HDOBH-11-I	4	47	11
HDOBH-12-I	4	50	12
HDOBH-13-I	4	51	13
HDOBH-14-I	4	81	14
HDOBH-16-I	4	88	16
HDOBH-18-I	6	103	18
HDOBH-20-I	6	110	20
HDOBH-22-I	6	120	22
HDOBH-24-I	7	132	24
HDOBH-26-I	8	148	26
HDOBH-30-I	8	179	30
HDOBH-36-I	8	223	36
HDOBH-42-I	10	243	42
HDOBH-48-I	13	263	48

## Pilot Bits Adapters



PE-153-I



PE-183-I

Description	Part No.	Approx. Wt.lbs.
Pilot Bit Adapter	PE153-I	10.5
Pilot Bit Adapter Bolt & Nut	PA183L-I	8.3

**DRILLING WORLD-1-800-331-9988 - [www.drillingworld.com](http://www.drillingworld.com)**



# TCH Drill Heads

## Carbide Drill Heads



95TCH171-I



55TCH171-I



45TCH171-I



375TCH171-I

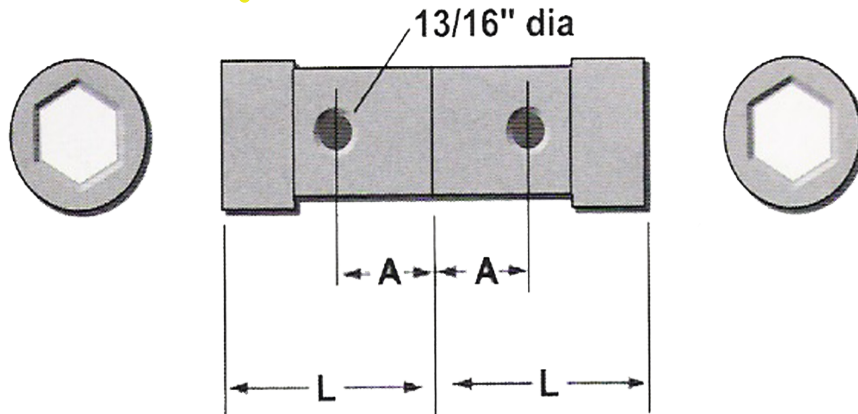
Drilling World's TCH series drill heads are recommended for all types of hard, uniform formations such as frozen ground, quartz and cemented conglomerates. TCH heads are designed to grind away non-fracturable rock by destroying its cohesive strength.

Description	Diameter in.	Approx Wt. lbs.	Lug Size
250TCH171-I	2-1/4	1.5	13/16 Hex
375TCH171-M-I 375TCH-171-L-I	3-3/4	3.3	Med. Large
45TCH171-M-I 45TCH171-L-I	4-1/2	4.6	Med. Large
50TCH171-I	5	6.0	Large
55TCH171-I	5-1/2	6.5	Large
65TCH171-I	6-1/2	8.0	Large
85TCH171-I	8-1/2	9.5	Large
95TCH171-I	9-1/2	10.6	Large

**DRILLING WORLD-1-800-331-9988 - [www.drillingworld.com](http://www.drillingworld.com)**

# Hex Coupler & Hub

## Hex Couplers



Description	A	L	Approx lbs.	Part No.
2" x 2"	3"	12"	13	H-200-C-I
2-1/2" x 2 1/2"	5"	12"	22	H-250-C-I
2-5/8" x 2-5/8"	5"	16"	21	H-262-C-I

## Hex Hubs



Hub Size	Part No.
2"	H2-I
2-1/2"	H250-I
2-5/8"	H262-I
3"	H3-I



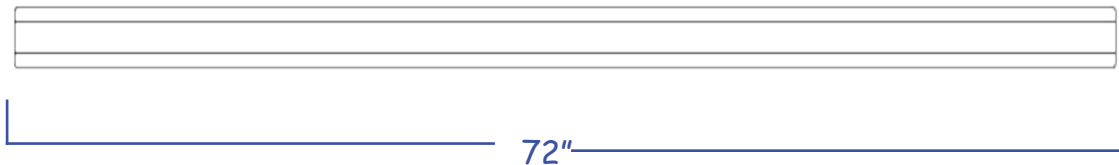
# Hex Bars

## Hex-Kelly Bar Extensions



Hub Size	Bar Size	Bar Length	Part No.
2"	2"	72"	HE-200-72-I
2 1/2"	2 1/2"	72"	HE-250-72-I
2-5/8"	2-5/8"	72"	HE-262-I
3"	3"	72"	HE-300-72-I

## Hex-Kelly Bar without Holes



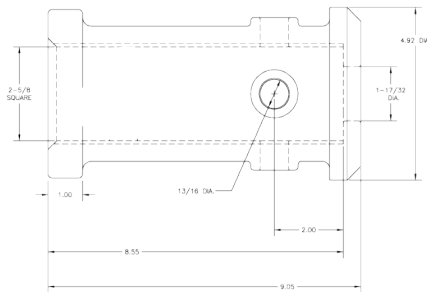
Hub Size	Bar Length	Part No.
2"	72"	HX-200-72-I
2-1/2"	72"	HX-250-72-I
2-5/8"	72"	HX-262-72-I
3"	72"	HX-300-72-I

# Kelly Boxes

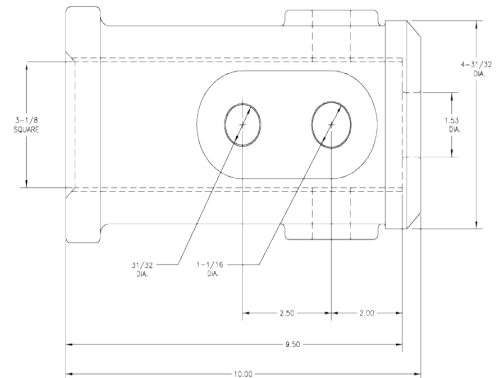
## Kelly Boxes with Bottom



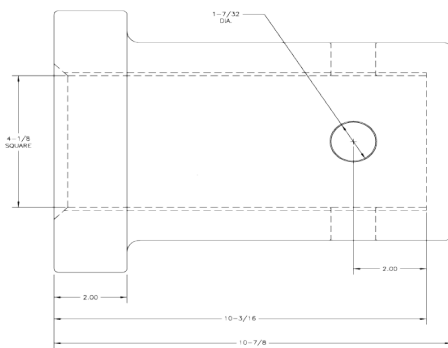
Part No.	Size	Approx Wt. lbs.
B250-I	2 1/2"	23
B3-I	3"	40
B400-I	4"	78.5
B525-I	5 1/4"	114
B7-I	7"	213



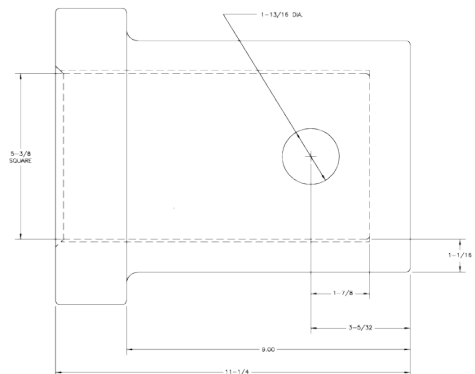
**B250-I**



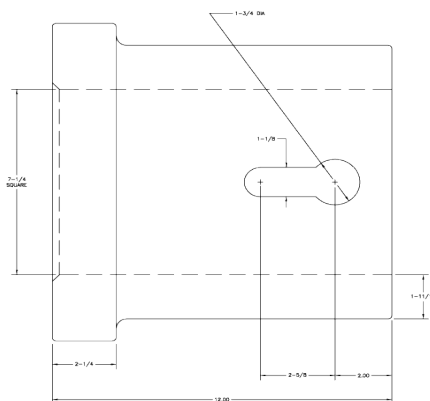
**B3-I**



**B4-I**



**B525-I**



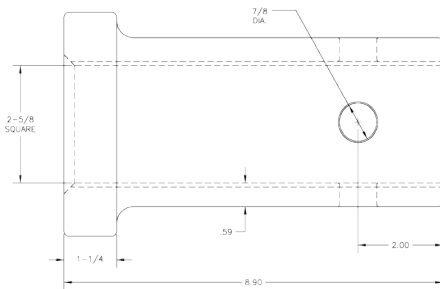
**B7-I**



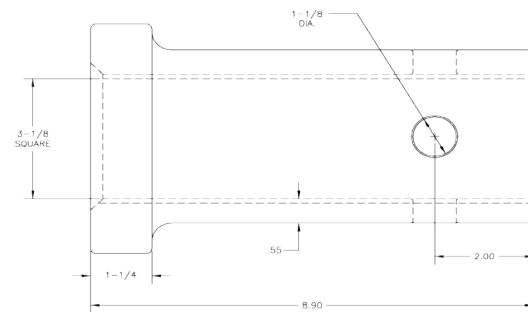
## Kelly Boxes-No Bottom



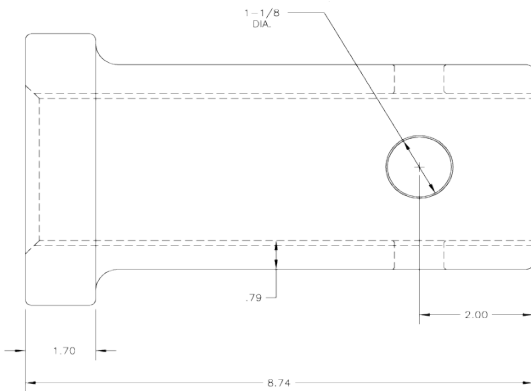
Part No.	Size	Approx Wt. lbs.
DB250-I	2 1/2"	22
DB300-I	3"	26.5
DB350-I	3 1/2"	38
DB400-I	4"	62
DB425-I	4 1/4"	64.5
S250-I	2 1/2"	20



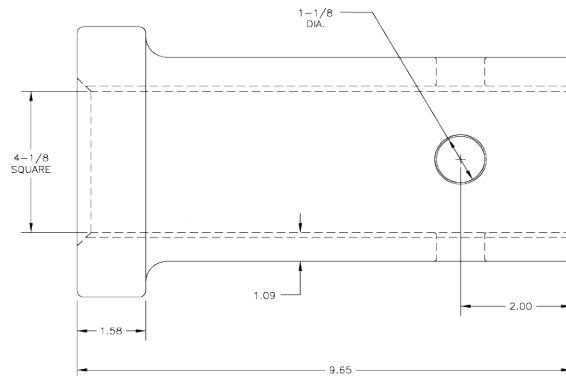
DB250-I



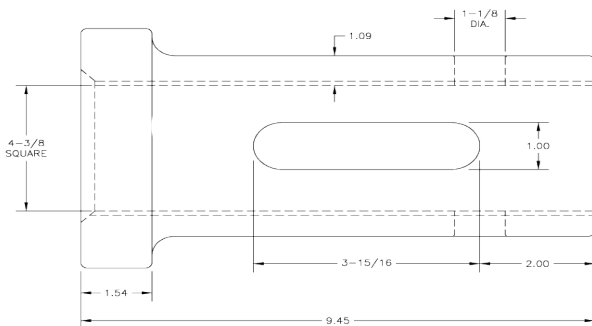
DB300-I



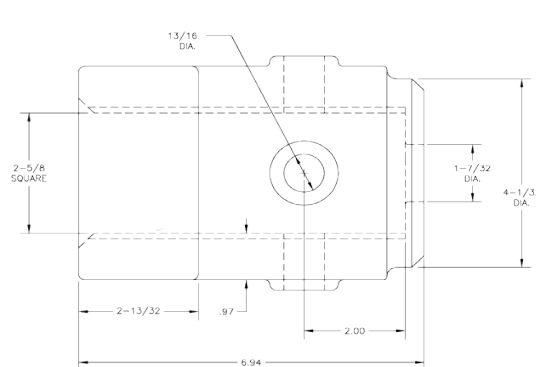
DB350-I



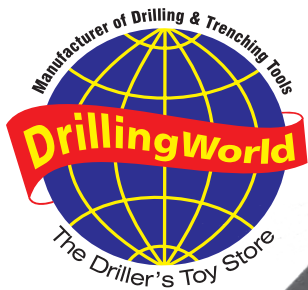
DB400-I



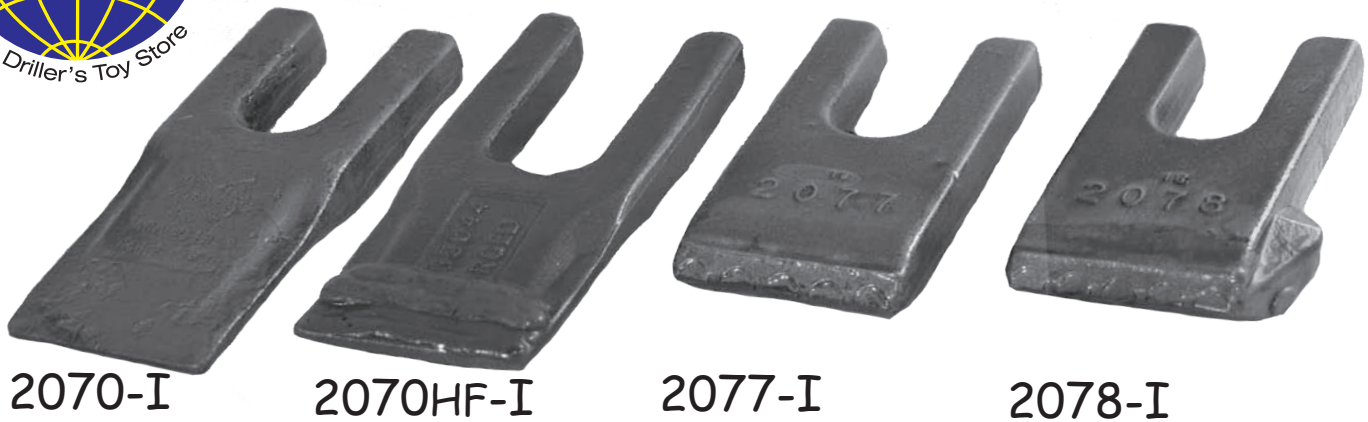
DB425-I



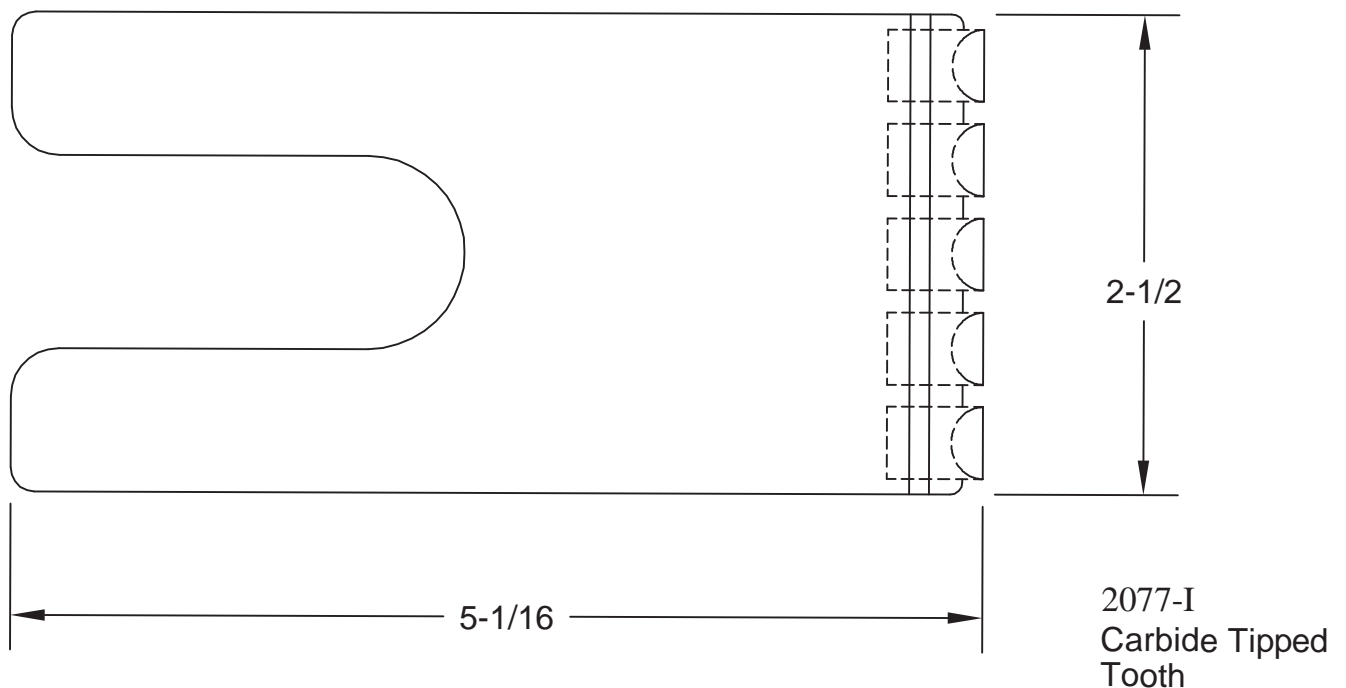
S250-I



# 2070 Series Teeth



Description	Part No.	Application	Installation in P-2070	Unit lbs.
Dirt	2070-I	Ordinary Digging	Yes	0.9
Hardfaced	2070HF-I	Abrasive Soil	Yes, HF-up	0.9
Carbide	2077-I	High Abrasion	Yes	1.0
Carbide Gage	2078-I	High Abrasion	Yes, Outside	1.1



**DRILLING WORLD-1-800-331-9988 - [www.drillingworld.com](http://www.drillingworld.com)**



# 2070 Series



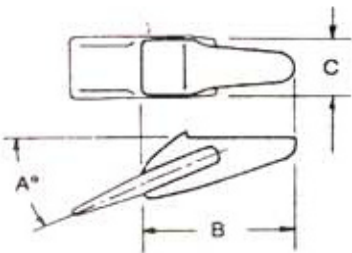
P2070-I



P2077-I

Description	Part No.	Application	Unit lbs.
Four Tooth Dirt Pilot	P2070-I	Ordinary Digging	30.0
Four Carbide Tooth Pilot	P2077-I	Fracturable Rock	30.0

## Replacement Tooth Holders for 2070 series



WA-70-I



FA-70-I



1ASR-I

Description/Part #	Approx. Wt.	A	B	C	Weld Location
WA-70-I	4.0	25	5	1 7/8	Inside & Outside
FA-70-I	5.0	15	3 1/2	3	Inside & Outside
1ASR-I	3.5	0	3 3/4	2 1/2	Side Cutter Position

**DRILLING WORLD-1-800-331-9988 - [www.drillingworld.com](http://www.drillingworld.com)**

# Pilots/Collars

## Pilots



MM1-I



MM2-I



DB-6

Part No.	Description	Approx lbs.
MM1-I	Stinger	10.25
MM2-I	2 3/8 API Thread	12.0
DB-10-I	Stinger	7.63
DB175-I	Hub 3.5 OD 1 3/4 sq.ID	4.40
DB175A-I	Hub 4.0 OD 1 3/4 dq ID	4.65

## Collars



DB175-I



DB175A-I



# Auger Teeth & Pockets

## Teeth



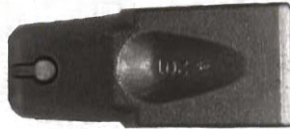
60-I



111-I



134-I



201-I



TC-212



211-I

Part #	Description	Approx. Wt. lbs.
60-I	Dirt Tooth	1.2
111-I	Dirt Tooth	1.4
TC112	Carbide Tooth	2.2
201-I	Dirt Tooth	2.2
201HF-I	Hardfaced Tooth	2.2
211-I	Clearance Cutter Tooth	3.0
211HF-I	Hardfaced Clearance Tooth	3.0
134-I	Dirt Tooth	2.5
TC-112	Carbide Tooth	2.5

## Pockets



WO1-I



WO2-I



WO5-I



WO8-I



WO9-I

Weld-On Pockets	60	70	111	TC-112	201	211	TC-212 (PFC2)
WO-1	X	X	X	X			
WO-2	X	X	X	X			
WO-5					X	X	X
WO-8					X	X	X
WO-9					X	X	X



# Drilling Components

## Drive Lugs



Description	Shank Connector	Approx. WT.	Used On
SHX-140-S-I	13/16 hex	0.6	SB-25 or SB-30
MHX-140-S-I	1-1/8 hex	1.0	SB-25 or SB-30
MHX-141-M-I	1-1/8 hex	1.6	SB-35 or SB-45
LHX-141-M-I	1-5/8 hex	3.1	SB-35 or SB-45
MHX-141-L-I	1-1/8 hex	2.3	SB-50 TO SB-100
LHX-141-L-I	1-5/8 hex	3.8	375-TCH-171 to 95-TCH-171

## Drive Pins

Part No.	Diameter	OAL Length	Fits Hex Size	Approx Wt. lbs.
001305-I	3/8"	1-1/2"	13/16 Hex (21mm)	0.1
001306-I	1/2"	2"	1-1/8 Hex (29mm)	0.2
001307-I	5/8"	2-3/4"	1-5/8 Hex (41mm)	0.3
001308-I	5/8"	3-1/2"	1-5/8 Hex (41mm)	0.4



# Bucket Teeth

## Bucket Teeth- Esco® Type



25S



30S

Part No.	Pin	Lock	Approx. lbs.
25S	25/30PN	25/30LK	5.3
30SH	25/30PN	25/30LK	5.5

## Installation Tools



SH85-I Hammer



Drift Punch

## Storage Tools



8" DISH



10" DISH



LUG